

MARINE ANIMAL

Identification guide

This guide can help you identify some important information regarding the animal involved in the emergency that you can communicate to the response network. You may not be able to confirm all of these characteristics, depending on the position of the animal and the species.

1 TEETH



Proceed to question 2



Proceed to question 2



Proceed to question 7



Proceed to question 8

2

BLOWHOLES OR GILLS



1 blowhole

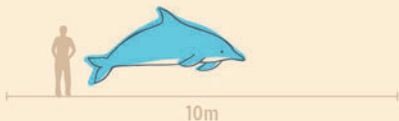


2 blowholes

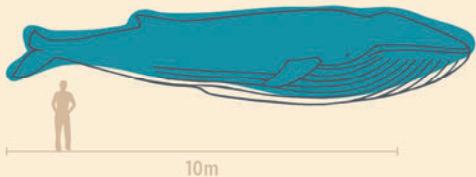


Gills

3 BODY LENGTH



Less than 10 metres in length

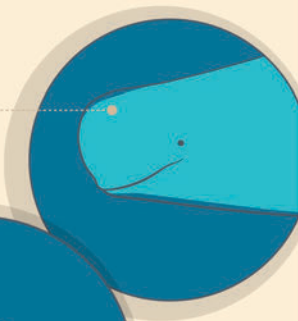


Over 10 metres in length

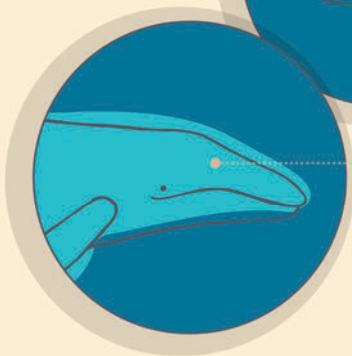
4

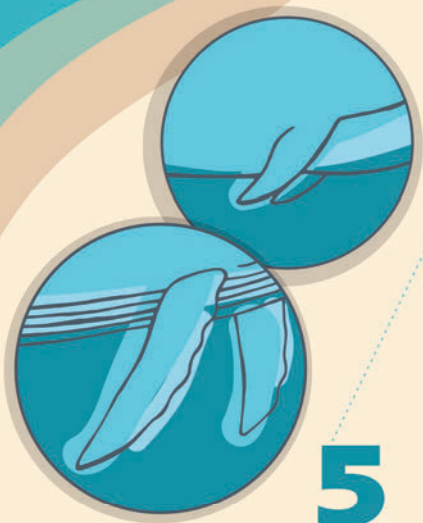
HEAD SHAPE

Rounded



Pointed





5

PECTORAL FIN

6 COLOUR PATTERNS



Brownish body



Gray colour with many barnacles



Black and white spots

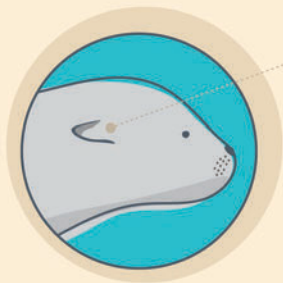


Black body with white callosities

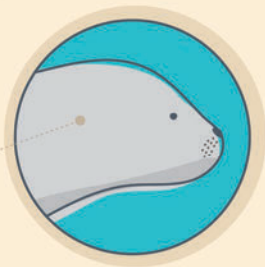


White body

7 EAR FLAPS



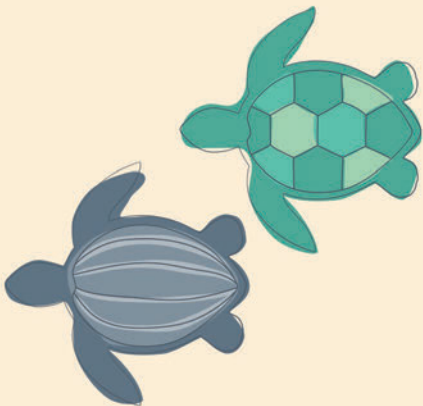
External ear flaps **present**



External ear flaps **absent**

8

**SHELL
(OR CARAPACE)**



You've successfully helped
to identify the animal species.



Canada

This project was undertaken with the
financial support of the Government of Canada.